

CHESNA

BY HALL7 REAL ESTATE





“

Life at Chesna extends far beyond your front door. The estate is a fully-integrated community built on the pillars of wellness, security, and world-class infrastructure.

”

CHESNA

Introduction

Hall 7 Real Estate Limited has provided innovative real estate developments since its establishment and registration over a decade ago.

We are intentional curators of communities, and our designs and estates are exquisite and time-tested, creating the best user experience for our customers. Our buildings are of the highest standard, and we take pride in creating opportunities for our valued stakeholders worldwide to learn about our projects, strategies, services, investment opportunities, and values.

We have had the pleasure of working with various reputable organizations in the past. Our commitment to delivering high-quality services has earned us a reputation that is never second-guessed.

This project portfolio highlights our outstanding service delivery over the years, and serves as one of the expressions of our commitment to transparency and openness to our stakeholders as well as every individual and organization interested in our products and services.

OLAYINKA BRAIMOH
CEO



I. The Genesis: An Invitation to 'More'

CHESNA



Front View, The Chesna, Katampe, Abuja.

Location:
Katampe, Nigeria

Size:
Minimum 1,100sqm

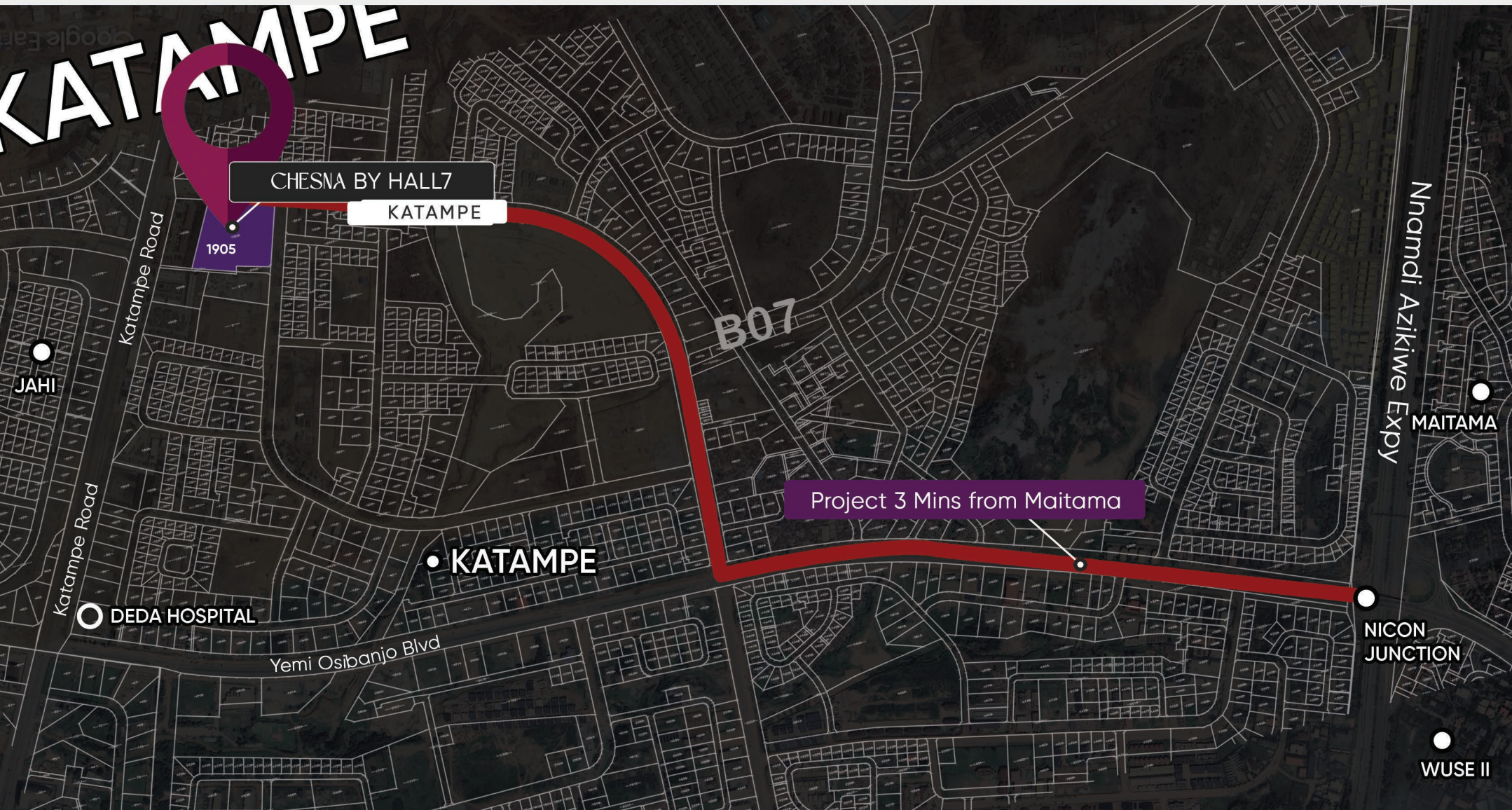
The Art of Intentional Living

True luxury is never accidental; it is the result of meticulous planning and a refusal to settle. Chesna was conceived for the individual who has seen the world and now seeks a sanctuary that mirrors their own standard of excellence.

This isn't just a collection of **14 maisonettes**; from the first sketch to the final stone, Chesna is a journey into finesse, designed for those who lead with grace and live with purpose.

II. The Setting: Katampe, The New Maitama

CHESNA



Google Earth Location, The Chesna, Katampe, Abuja.

Location:
Katampe, Nigeria

Size:
Minimum 1,100sqm

Positioned beautifully on the plains of Katampe, Chesna sits at the crossroads of serenity and status. Known as the "New Maitama," this district represents the future of Abuja's elite urban living.

Unrivalled Proximity: Enjoy a central hub with multi-point access to the CBD, Wuse II, and Maitama, ensuring you are never far from the city's pulse.

The Urban Sanctuary: A rare residential enclave that balances the energy of a growing metropolis with the quiet exclusivity of a private hill station.

A World-Class Ecosystem: Surrounded by a curated selection of international schools, premier medical centers, and high-end shopping malls, Katampe is where lifestyle meets convenience.

III. The Residence: Architectural Choreography

CHESNA



Rear View, The Chesna, Katampe, Abuja.

Location:
Katampe, Nigeria

Size:
Minimum 1,100sqm

Chesna is designed with an "Open-Flow" philosophy, where every square inch serves a purpose and every view is a statement.

* **The Sovereign Suites:** 5 expansive Sanctuary Bedrooms, each featuring a bespoke Walk-in Atelier (Closet) and spa-inspired en-suite.

* **Culinary Excellence:** A triple-kitchen layout, including a

high-tech Wet Kitchen, a social Dry Kitchen, and an intimate upper-level Kitchenette.

* **Grandeur by Design:** Experience the "Double-Volume" living room with floor-to-ceiling glazing that dissolves the wall between your home and the horizon.

* **Private Connectivity:** Move effortlessly between floors via your

III. The Residence: Architectural Choreography (...cont)

CHESNA



Balcony Zoom In, The Chesna, Katampe, Abuja.

Location:
Katampe, Nigeria

Size:
Minimum 1,100sqm

your Private Elevator, or retreat to the Study for moments of deep focus.

* **The Outdoor Oasis:** A fully decked pool area featuring both a Swimming Pool and a Cocktail Pool, designed for both vigorous mornings and elegant sunsets.

* **Large Forecourt:** A sprawling, meticulously paved private

compound with dedicated parking for 5 vehicles. The maisonette offers the rare luxury of space, ensuring that hosting an intimate gala or an elite gathering is as effortless as it is grand.

* **The Green Belt:** 360-degree landscaping and walkways that wrap the entire house in a lush, verdant embrace.

IV. The Estate: A Private Ecosystem

CHESNA



Gate House, The Chesna, Katampe, Abuja.

Beyond the Threshold: The Chesna Lifestyle

Life at the Chesna extends far beyond your front door. The estate is a fully-integrated community built on the pillars of wellness, security, and world-class infrastructure.

* **The Arena:** Dedicated sports areas for lawn tennis and basketball, alongside a multipurpose court for the active resident.

* **The Social Hub:** A private Clubhouse featuring a high-performance

Gym and an artisanal Restaurant for hosting or unwinding.

* **The Next Generation:** A secure, state-of-the-art Children's Playground designed for exploration and safety.

* **Invisible Infrastructure:** Underground drainage and wiring, alternative power solutions, and 24/7 bespoke security systems that ensure your peace of mind is never interrupted.

Location:
Katampe, Nigeria

Size:
Minimum 1,100sqm



CHESNA

Chesna is designed with an "Open-Flow" philosophy, where every square inch serves a purpose and every view is a statement.



Floor Plan



Ground Floor



First Floor

Property Information



5 Bedrooms



3 Kitchens



Dining Room



Study



Laundry



3 Living Rooms



5 Car Parking



Elevator



Swimming Pool



2 Service Quarters

Location:
Katampe, Abuja

Plot Size:
Minimum 1,100sqm



Site Layout

Location:
Katampe, Abuja

No of Units: 14

Plot Size:
Minimum 1,100 SQM

EXECUTED PROJECTS

“

True luxury is never accidental; it is the result of meticulous planning and a refusal to settle.

”

**BROOK
SHORE**
RESIDENCE

Location:
Karsana, Abuja

No of Units: 236



NUN
S T R E E T

Location:
Maitama, Abuja

No of Units: 02



HALL 7
REAL ESTATE LIMITED

RC 1089952

THE
BRIDGE
APARTMENTS & TOWNHOUSES

Location:
Idu, Abuja

No of Units: 47



HALL 7
REAL ESTATE LIMITED

RC 1089952



**IMPERIAL
VISTA**

Location:
LifeCamp, Abuja

No of Units: 204



PLEASE CONFIRM INVESTMENT AMOUNT BEFORE PAYMENT IS MADE. PRICES ARE EXCLUSIVE OF VAT.

Thank you

You can contact us for further enquiries
info@hall7projects.com

For more info, please visit our website :
www.hall7projects.com



Disclaimer: All pictures, plans, layouts, information, data and details included in this brochure are indicative only and may change at any time up to the final "as-built" status in accordance with final designs of the project, regulatory approvals and planning permissions.