






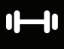


YONA RESIDENCE, (LIFE CAMP & GUZAPE MAIN)

Location

(No 6, Princess Chibuzor Crescent, Life Camp, Abuja, Nigeria.) & (Plot LDC 378, Cadastral Zone A09, Guzape Main, Abuja, Nigeria.)

Property Information

-  4 Bedrooms
-  Modern Kitchen
-  2 Car Parking
-  2 Living Rooms
-  Recreational Area
-  Swimming pool
-  Semi-Detached Duplex
-  Gym

Your Investment Journey

- 40% as Initial Investment
- 40% at Second Suspended Slab
- 20% at Handover (Finished at Guzape, Semi-Finished at Life Camp)

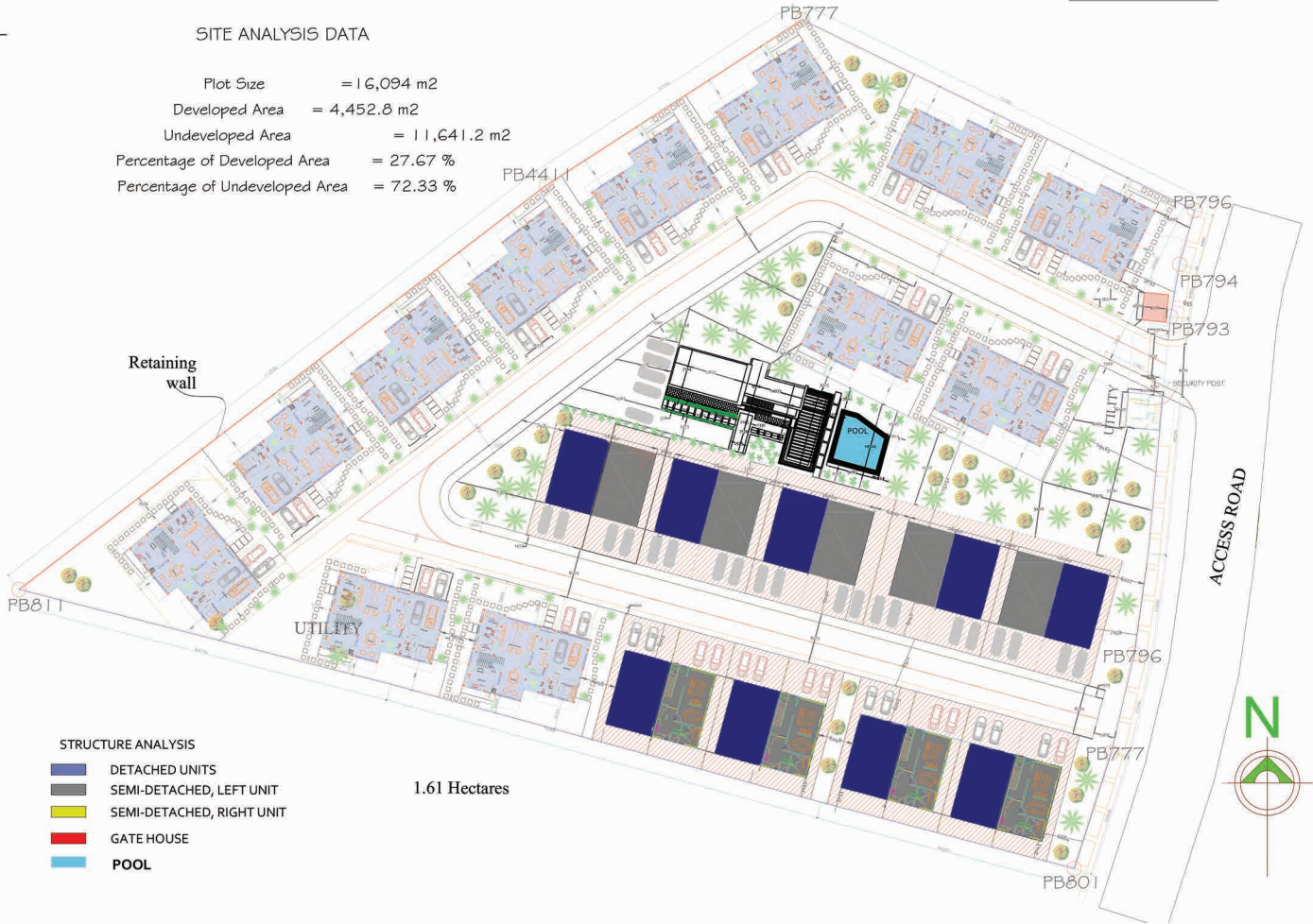


GUZAPE MAIN

18
UNITS
OF YONA

SITE ANALYSIS DATA

Plot Size = 16,094 m²
 Developed Area = 4,452.8 m²
 Undeveloped Area = 11,641.2 m²
 Percentage of Developed Area = 27.67 %
 Percentage of Undeveloped Area = 72.33 %



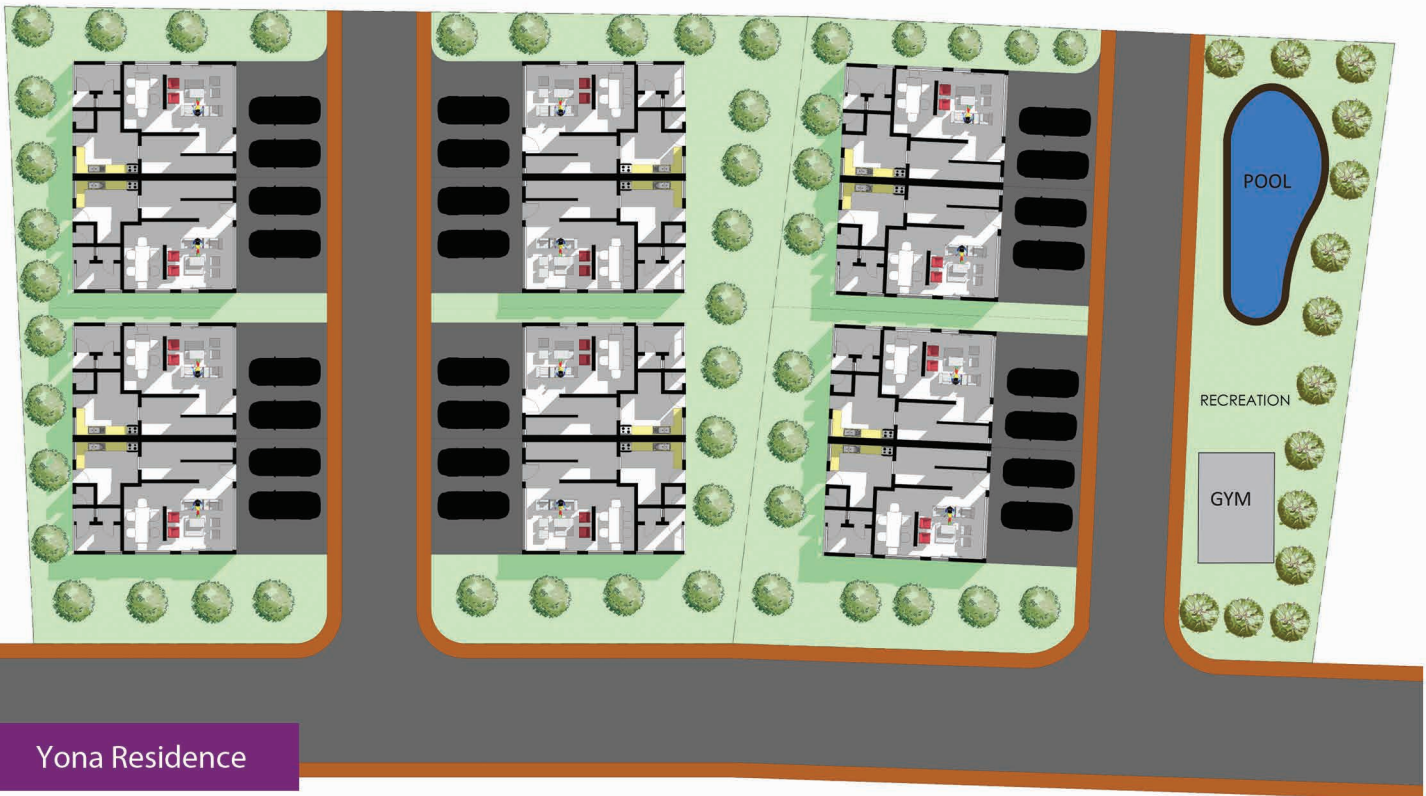
- STRUCTURE ANALYSIS**
- DETACHED UNITS
 - SEMI-DETACHED, LEFT UNIT
 - SEMI-DETACHED, RIGHT UNIT
 - GATE HOUSE
 - POOL

1.61 Hectares

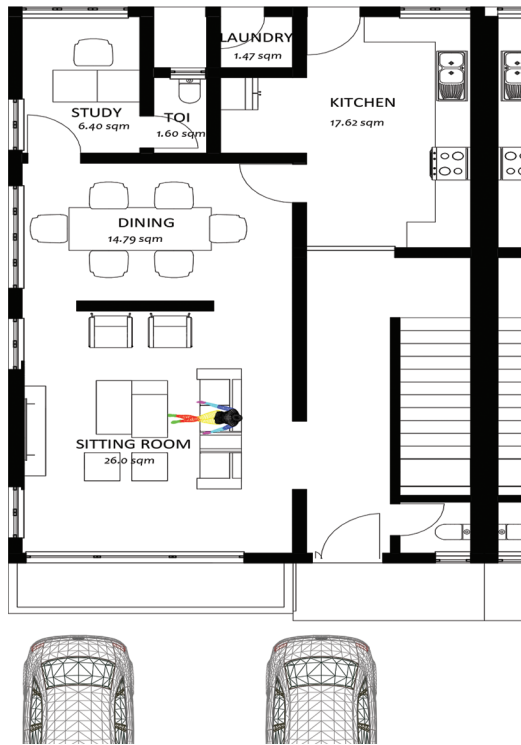


LIFE CAMP, BEFORE LIFE CAMP JUNCTION

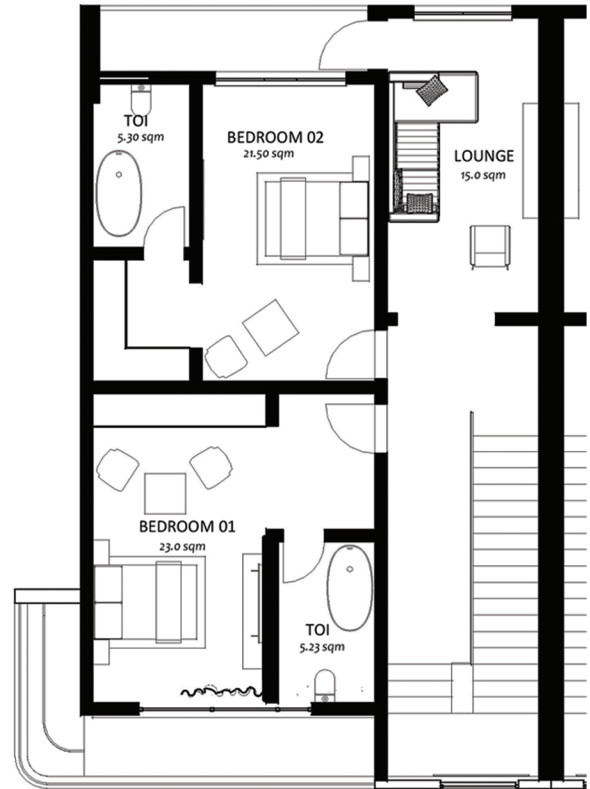
12
UNITS
OF YONA



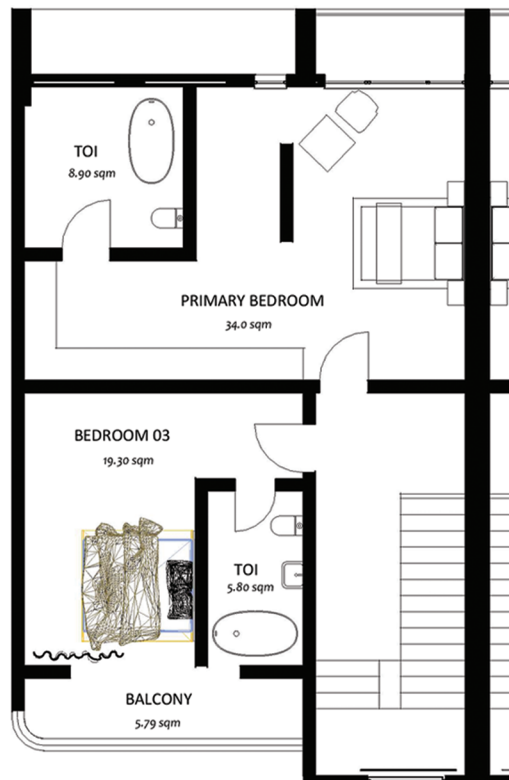
FLOOR PLAN



Ground Floor



First Floor



Second Floor